

ER65

A balancing machine with a 17" monitor and intuitive graphical display which, combined to its ergonomic weight tray, conveys prestige to the tire shop and transmits a sense of efficiency and professionalism to end users.

- Automatic data-entry of distance, diameter & rim width
- Automatic Approach software positions the wheels at the correction point
- Wheel lock with laser pointer for weight application
- Ergonomic design saves shop space
- LA Sonar



Standard Manual Accessories

Rim Width Gauge
46FC77653



Weight Hammer
301400425



Manual Locking Kit
41FF83146



Cones
40FF88351



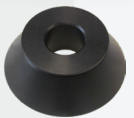
40FF43715



40FF43716



40FF61043



Optional Accessories

Accessory Rack
41FF03151



Pin Plate Adaptor
41FFA6478



2-Piece Truck Cone Kit
41FF86174



Pneumatic Wheel Lift
46FL85170



Technical Information

Power Supply:	110V, 1ph
Wheel Clamping Type:	Manual
Max. Rim Diameter:	30" (765 mm)
Max. Rim Width:	20" (510 mm)
Max. Tire Diameter:	42" (1067 mm)
Max. Wheel Weight:	165 lbs. (75 kg)
Shipping Weight:	365 lbs. (165 kg)